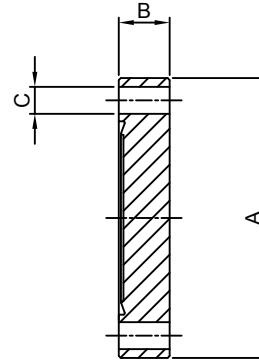


### CF BLANK FLANGES

- \* MATERIAL: STAINLESS STEEL
- \* BAKEABLE UP TO 450°C
- \* VACUUM RATING  $1 \times 10^{-11}$  mbar
- \* WIDE RANGE OF ELBOWS, CROSSES & TEES ARE AVAILABLE
- \* TUBULATED FLANGES ARE AVAILABLE FOR WELDING TO STAINLESS STEEL TUBE

ORDER CODE	MAT'L	NW	A	B	C	xNo.
F16	304L	16	34	7.6	4.3	6
F35	304L	35	70	12.7	6.7	6
F63	304L	63	114	17.4	8.3	8
F100	304L	100	152	19.9	8.3	16
F150	304L	150	203	22.3	8.3	20
F200	304L	200	254	24.6	8.3	24
F250	304L	250	304	27.3	10.3	32
F250-SPE*	304L	300	304	27.3	8.3	32

For flanges with tapped bolt holes please add suffix T to order codes (eg F16T)  
 \* European standard, to be used with copper gasket OD 272.7 mm



ORDER CODE	MAT'L	NW	A	B	C	xNo.
F16LNS	316LN	16	34	7.3	4.3	6
F35LNS	316LN	35	70	13.0	6.5	6
F63LNS	316LN	63	113.5	17.5	8.4	8
F100LNS	316LN	100	151.6	19.8	8.4	16
F150LNS	316LN	150	202.4	22.2	8.4	20
F200LNS	316LN	200	253.2	24.6	8.4	24
F250LNS	316LN	250	306	24.6	8.4	32

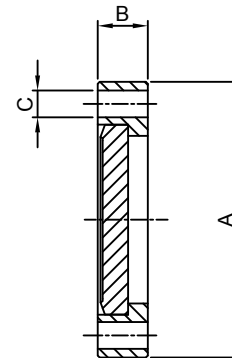
For flanges with tapped bolt holes please add suffix T to order codes (eg F16LNTS)  
 \* European standard, to be used with copper gasket OD 272.7 mm

### CF BLANK FLANGES - ROTATABLE

- \* MATERIAL: STAINLESS STEEL
- \* BAKEABLE UP TO 450°C
- \* VACUUM RATING  $1 \times 10^{-11}$  mbar
- \* WIDE RANGE OF ELBOWS, CROSSES & TEES ARE AVAILABLE
- \* TUBULATED FLANGES ARE AVAILABLE FOR WELDING TO STAINLESS STEEL TUBE

ORDER CODE	MAT'L	NW	A	B	C	xNo.
F16R	304L	16	34	7.6	4.6	6
F35R	304L	35	70	12.7	6.7	6
F63R	304L	63	114	17.4	8.3	8
F100R	304L	100	152	19.9	8.3	16
F150R	304L	150	203	22.3	8.3	20
F200R	304L	200	254	24.6	8.3	24
F250R	304L	250	304	27.3	10.3	32
F250R-SPE*	304L	300	304	27.3	8.3	32

For flanges with tapped bolt holes please add suffix T to order codes (eg F16T)  
 \* European standard, to be used with copper gasket OD 272.7 mm



ORDER CODE	MAT'L	NW	A	B	C	xNo.
F16RLNS	316LN	16	34	7.3	4.3	6
F35RLNS	316LN	35	70	13.0	6.5	6
F63RLNS	316LN	63	113.5	17.5	8.4	8
F100RLNS	316LN	100	151.6	19.8	8.4	16
F150RLNS	316LN	150	202.4	22.2	8.4	20
F200RLNS	316LN	200	253.2	24.6	8.4	24
F250RLNS	316LN	250	306	24.6	8.4	32

For flanges with tapped bolt holes please add suffix T to order codes (eg F16LNTS)  
 \* European standard, to be used with copper gasket OD 272.7 mm