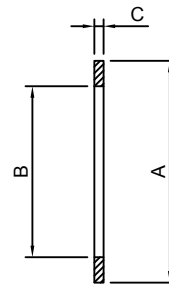


CF COPPER GASKETS

ORDER CODE	NW	A	B	C
CU16	16	21	16	2
CU35	35	48	37	2
CU63	63	82	63	2
CU100	100	120	101	2
CU150	150	171	152	2
CU200	200	222	203	2
CU250	250	270	254	2
SPCU250*	250	272.7	254	2
CU300	300	321	300	2

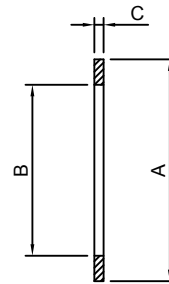
OFCF Copper, hardness approx. 85 Brinell.
* European standard



CF COPPER GASKETS, ANNEALED

ORDER CODE	NW	A	B	C
CUA16	16	21	16	2
CUA35	35	48	37	2
CUA63	63	82	63	2
CUA100	100	120	101	2
CUA150	150	171	152	2
CUA200	200	222	203	2
CUA250	250	270	254	2
SPCUA250*	300	272.7	300	2

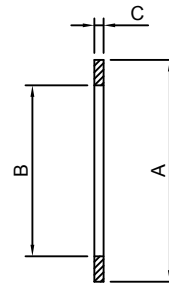
Recommended to be used with viewports, hardness approx. 45 Brinell.
* European standard



CF COPPER GASKETS, SILVER PLATED

ORDER CODE	NW	A	B	C
CU16SP	16	21	16	2
CU35SP	35	48	37	2
SPCU35SP39	35	48	39	2
CU63SP	63	82	63	2
SPCU63SP67	63	82	67	2
SPCU63SP72	63	82	72	2
CU100SP	100	120	101	2
CU150SP	150	171	152	2
CU200SP	200	222	203	2
CU250SP	250	270	250	2
SPCU250SP*	250	270	252	2

Silver plating (5-7 um) prevents oxidation of the parts exposed to atmosphere during bakeout, *European standard



CF COPPER GASKETS, SILVER PLATED, ANNEALED

ORDER CODE	NW	A	B	C
CUA16SP	16	21	16	2
CUA35SP	35	48	37	2
CUA38SP	35	48	39	2
CUA63SP	63	82	63	2
CUA100SP	100	120	101	2
CUA150SP	150	171	152	2
CUA200SP	200	222	203	2
CUA250SP	250	270	254	2

Silver plating (5-7 um) prevents oxidation of the parts exposed to atmosphere during bakeout, *European standard

