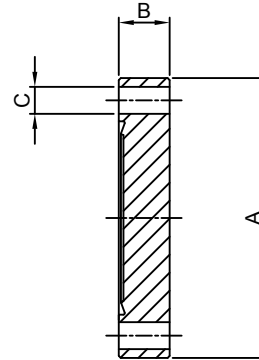


### CF BLANK FLANGES

- \* MATERIAL: STAINLESS STEEL
- \* BAKEABLE UP TO 450°C
- \* VACUUM RATING 1x10<sup>-11</sup>mbar
- \* WIDE RANGE OF ELBOWS, CROSSES & TEES ARE AVAILABLE
- \* TUBULATED FLANGES ARE AVAILABLE FOR WELDING TO STAINLESS STEEL TUBE

| ORDER CODE | MAT'L | NW  | A   | B    | C    | xNo. |
|------------|-------|-----|-----|------|------|------|
| F16        | 304L  | 16  | 34  | 7.6  | 4.3  | 6    |
| F35        | 304L  | 35  | 70  | 12.7 | 6.7  | 6    |
| F63        | 304L  | 63  | 114 | 17.4 | 8.3  | 6    |
| F100       | 304L  | 100 | 152 | 19.9 | 8.3  | 8    |
| F150       | 304L  | 150 | 203 | 22.3 | 8.3  | 16   |
| F200       | 304L  | 200 | 254 | 24.6 | 8.3  | 24   |
| F250       | 304L  | 250 | 304 | 27.3 | 10.3 | 32   |
| F250-SPE*  | 304L  | 300 | 304 | 27.3 | 8.3  | 32   |

For flanges with tapped bolt holes please add suffix T to order codes (eg F16T)  
 \* European standard, to be used with copper gasket OD 272.7 mm



| ORDER CODE | MAT'L | NW  | A     | B    | C   | xNo. |
|------------|-------|-----|-------|------|-----|------|
| F16LNS     | 316LN | 16  | 34    | 7.3  | 4.3 | 6    |
| F35LNS     | 316LN | 35  | 70    | 13.0 | 6.5 | 6    |
| F63LNS     | 316LN | 63  | 113.5 | 17.5 | 8.4 | 8    |
| F100LNS    | 316LN | 100 | 151.6 | 19.8 | 8.4 | 16   |
| F150LNS    | 316LN | 150 | 202.4 | 22.2 | 8.4 | 20   |
| F200LNS    | 316LN | 200 | 253.2 | 24.6 | 8.4 | 24   |
| F250LNS    | 316LN | 250 | 306   | 24.6 | 8.4 | 32   |

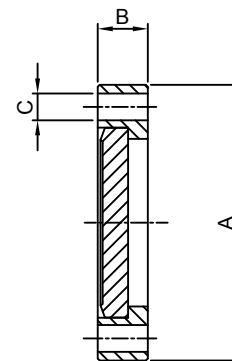
For flanges with tapped bolt holes please add suffix T to order codes (eg F16LNTS)  
 \* European standard, to be used with copper gasket OD 272.7 mm

### CF BLANK FLANGES - ROTATABLE

- \* MATERIAL: STAINLESS STEEL
- \* BAKEABLE UP TO 450°C
- \* VACUUM RATING 1x10<sup>-11</sup>mbar
- \* WIDE RANGE OF ELBOWS, CROSSES & TEES ARE AVAILABLE
- \* TUBULATED FLANGES ARE AVAILABLE FOR WELDING TO STAINLESS STEEL TUBE

| ORDER CODE | MAT'L | NW  | A   | B    | C    | xNo. |
|------------|-------|-----|-----|------|------|------|
| F16R       | 304L  | 16  | 34  | 7.6  | 4.6  | 6    |
| F35R       | 304L  | 35  | 70  | 12.7 | 6.7  | 6    |
| F63R       | 304L  | 63  | 114 | 17.4 | 8.3  | 6    |
| F100R      | 304L  | 100 | 152 | 19.9 | 8.3  | 8    |
| F150R      | 304L  | 150 | 203 | 22.3 | 8.3  | 16   |
| F200R      | 304L  | 200 | 254 | 24.6 | 8.3  | 24   |
| F250R      | 304L  | 250 | 304 | 27.3 | 10.3 | 32   |
| F250R-SPE* | 304L  | 300 | 304 | 27.3 | 8.3  | 32   |

For flanges with tapped bolt holes please add suffix T to order codes (eg F16T)  
 \* European standard, to be used with copper gasket OD 272.7 mm



| ORDER CODE | MAT'L | NW  | A     | B    | C   | xNo. |
|------------|-------|-----|-------|------|-----|------|
| F16RLNS    | 316LN | 16  | 34    | 7.3  | 4.3 | 6    |
| F35RLNS    | 316LN | 35  | 70    | 13.0 | 6.5 | 6    |
| F63RLNS    | 316LN | 63  | 113.5 | 17.5 | 8.4 | 8    |
| F100RLNS   | 316LN | 100 | 151.6 | 19.8 | 8.4 | 16   |
| F150RLNS   | 316LN | 150 | 202.4 | 22.2 | 8.4 | 20   |
| F200RLNS   | 316LN | 200 | 253.2 | 24.6 | 8.4 | 24   |
| F250RLNS   | 316LN | 250 | 306   | 24.6 | 8.4 | 32   |

For flanges with tapped bolt holes please add suffix T to order codes (eg F16LNTS)  
 \* European standard, to be used with copper gasket OD 272.7 mm