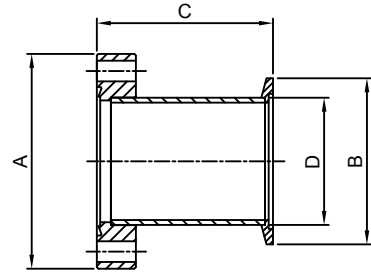


CF TO KF TUBULATED ADAPTORS

- * MATERIAL: 304L STAINLESS STEEL
- * BAKEABLE TO 150° C
- * VACUUM RATING 1x10⁻⁸ mbar
- * WIDE RANGE OF ELBOWS, CROSSES, TEES, & FLEXIBLE HOSES ARE AVAILABLE

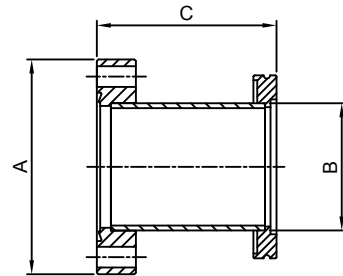
ORDER CODE	MAT'L	NW	A	B	C	D
KA1610	304L	16CF/KF10	34	30	36	14
KA1616	304L	16CF/KF16	34	30	36	20
KA3510	304L	35CF/KF10	70	30	36	14
KA3516	304L	35CF/KF16	70	30	36	20
KA3525	304L	35CF/KF25	70	40	36	28
KA3540	304L	35CF/KF40	70	55	50	45
KA6325	304L	63CF/KF25	114	40	50	28
KA6340	304L	63CF/KF40	114	55	50	45
KA6350	304L	63CF/KF50	114	75	50	57
KA1025	304L	100CF/KF25	152	40	50	28
KA1040	304L	100CF/KF40	152	55	50	45
KA1050	304L	100CF/KF50	152	75	50	57
KA1525	304L	150CF/KF25	203	40	70	28
KA1540	304L	150CF/KF40	203	55	70	45
KA1550	304L	150CF/KF50	203	75	70	57



CF TO ISO TUBULATED ADAPTORS

- * MATERIAL: 304L STAINLESS STEEL
- * BAKEABLE TO 150° C
- * VACUUM RATING 1x10⁻⁸ mbar
- * WIDE RANGE OF ELBOWS, CROSSES, TEES, & FLEXIBLE HOSES ARE AVAILABLE

ORDER CODE	MAT'L	NW	A	B	C	D
SA6363	304L	63CF/ISO63	114	95	90	70
SA1063	304L	100CF/ISO63	152	95	90	76
SA1010	304L	100CF/ISO100	152	130	90	102
SA1016	304L	100CF/ISO160	152	180	90	76
SA1563	304L	100CF/ISO63	203	95	90	76
SA1510	304L	100CF/ISO63	203	130	90	108
SA1516	304L	100CF/ISO160	203	180	90	152



CF ZERO LENGTH FLANGE ADAPTORS

- * MATERIAL: 304L STAINLESS STEEL
- * BAKEABLE TO 150° C
- * VACUUM RATING 1x10⁻⁸ mbar
- * WIDE RANGE OF ELBOWS, CROSSES, TEES, & FLEXIBLE HOSES ARE AVAILABLE

ORDER CODE	MAT'L	NW	A	B	C	D	xNo.
ZL3516	304L	35/16	70	12.7	13.2	M4	6
ZL6316	304L	63/16	114	17.5	13.2	M4	6
ZL6335	304L	63/35	114	17.5	36.9	M6	6
ZL1035	304L	100/35	152	19.9	36.9	M6	6
ZL1063	304L	100/63	152	19.9	61.2	M8	8
ZL1535	304L	150/35	203	22.3	36.9	M6	6
ZL1563	304L	150/63	203	22.3	61.2	M8	8
ZL1510	304L	150/100	203	22.3	99.4	M8	16
ZL2035	304L	200/35	254	24.6	36.9	M6	6
ZL2035	304L	200/63	254	24.6	61.2	M8	8
ZL2010	304L	200/100	254	24.6	99.4	M8	16
ZL2015	304L	200/150	254	24.6	149.7	M8	20
ZL2535	304L	250/35	304	25.4	36.9	M6	6
ZL2563	304L	250/63	304	25.4	61.2	M8	8
ZL2510	304L	250/100	304	25.4	61.2	M8	16
ZL2515	304L	250/150	304	25.4	149.7	M8	20
ZL2520	304L	250/200	304	25.4	200.4	M8	24

